

# Early mortality among adults accessing antiretroviral treatment programmes in sub-Saharan Africa

Stephen D. Lawn<sup>a,b</sup>, Anthony D. Harries<sup>b,c,d</sup>, Xavier Anglaret<sup>e,f</sup>,  
Landon Myer<sup>g,h</sup> and Robin Wood<sup>a</sup>

Two-thirds of the world's HIV-infected people live in sub-Saharan Africa, and more than 1.5 million of them die annually. As access to antiretroviral treatment has expanded within the region; early pessimism concerning the delivery of antiretroviral treatment using a large-scale public health approach has, at least in the short term, proved to be broadly unfounded. Immunological and virological responses to ART are similar to responses in patients treated in high-income countries. Despite this, however, early mortality rates in sub-Saharan Africa are very high; between 8 and 26% of patients die in the first year of antiretroviral treatment, with most deaths occurring in the first few months. Patients typically access antiretroviral treatment with advanced symptomatic disease, and mortality is strongly associated with baseline CD4 cell count less than 50 cells/ $\mu$ l and WHO stage 4 disease (AIDS). Although data are limited, leading causes of death appear to be tuberculosis, acute sepsis, cryptococcal meningitis, malignancy and wasting syndrome. Mortality rates are likely to depend not only on the care delivered by antiretroviral treatment programmes, but more fundamentally on how advanced disease is at programme enrolment and the quality of preceding healthcare. In addition to improving delivery of antiretroviral treatment and providing it free of charge to the patient, strategies to reduce mortality must include earlier diagnosis of HIV infection, strengthening of longitudinal HIV care and timely initiation of antiretroviral treatment. Health systems delays in antiretroviral treatment initiation must be minimized, especially in patients who present with advanced immunodeficiency.

© 2008 Wolters Kluwer Health | Lippincott Williams & Wilkins

*AIDS* 2008, **22**:1897–1908

**Keywords:** Africa, AIDS, antiretroviral treatment, death, highly active antiretroviral therapy, HIV, mortality

---

<sup>a</sup>Desmond Tutu HIV Centre, Institute for Infectious Disease and Molecular Medicine, Faculty of Health Sciences, University of Cape Town, Cape Town, South Africa, <sup>b</sup>Clinical Research Unit, Department of Infectious and Tropical Diseases, London School of Hygiene & Tropical Medicine, London, UK, <sup>c</sup>HIV Unit, Ministry of Health, <sup>d</sup>Family Health International, Malawi Country Office, Lilongwe, Malawi, <sup>e</sup>Programme PAC-CI, Abidjan, Ivory Coast, <sup>f</sup>INSERM, Unité 897, Centre de Recherche Epidémiologie et Biostatistique, Bordeaux, France, <sup>g</sup>Infectious Diseases Epidemiology Unit, School of Public Health and Family Medicine, Faculty of Health Sciences, University of Cape Town, Cape Town, South Africa, and <sup>h</sup>Department of Epidemiology, Mailman School of Public Health, Columbia University, New York, USA.

Correspondence to Stephen D. Lawn, Desmond Tutu HIV Centre, Institute of Infectious Disease and Molecular Medicine, Faculty of Health Sciences, University of Cape Town, Anzio Road, Observatory 7925. Cape Town, South Africa.

E-mail: stevelawn@yahoo.co.uk

Received: 2 October 2007; revised: 25 February 2008; accepted: 6 March 2008.

DOI:10.1097/QAD.0b013e32830007cd

## Introduction

Development of highly active antiretroviral treatment (ART) in the mid-1990s revolutionized the care of HIV-infected patients and led to marked reductions in HIV-associated morbidity and mortality in many industrialized countries [1–3]. Over 10 years later, access to ART remains limited in sub-Saharan Africa and other resource-constrained settings where the need is greatest. Although only 10% of the world's population live in sub-Saharan Africa, the region is nevertheless home to around two-thirds of the world's HIV-infected people [4]. In 2007, an estimated 22.5 million adults and children in the region were living with HIV/AIDS and 1.6 million died, representing 76% of global AIDS deaths [4]. Great progress has been made in providing access to ART in sub-Saharan Africa; by April 2007, approximately 1.3 million people were receiving ART – some 28% of the 4.8 million people estimated to be in need [5]. However, in addition to much needed HIV prevention measures, ongoing expansion of capacity to effectively deliver ART long-term to large numbers of people is urgently required.

Early pessimism concerning effective delivery of ART on a large scale using a simplified public health approach has largely proven unfounded, at least in the short term. For example, ART access has been rapidly expanded on a massive scale in Lusaka, Zambia, in Abidjan, Cote D'Ivoire, and on a country-wide scale in Malawi with good early clinical outcomes [6–8]. High levels of treatment compliance and virological suppression have been achieved in both hospital-based and community-based programmes [9–11]. Meta-analyses of data from treatment cohorts have found that the efficacy of ART, as reflected by rates of viral load suppression and CD4 cell count recovery, is similar among patients treated in high-income and resource-limited settings [12,13]. ART has been demonstrated to be a cost-effective intervention in resource-poor settings [14–16]. Furthermore, ART was estimated to have averted 250 000–350 000 deaths in low and middle-income countries in 2005 alone [17].

Despite these positive findings, data from the region suggest that early mortality rates among adults in ART programmes are high [12], contributing to substantial losses in overall patient retention [18]. The ART-lower income country (ART-LINC) collaboration compared outcomes from 18 ART programmes in lower income settings (predominantly in Africa) with those in 12 HIV cohort studies from Europe and North America [12]. This analysis found that early mortality following initiation of ART was several-fold higher among patients in resource-limited settings compared to that of patients treated in high-income settings, even after adjusting for baseline immunodeficiency [12]. High mortality rates in individual cohorts in sub-Saharan Africa have also been reported on. To gain a greater understanding of this

problem, we review the mortality rates, temporal distribution, risk factors and causes of death among adult patients accessing ART programmes in sub-Saharan Africa and consider possible strategies to address this.

## Search strategy and selection criteria

We searched English-language publications in MEDLINE, using the terms 'antiretroviral\*', 'Highly Active Anti-Retroviral Therapy (HAART)', 'ART', 'Africa', 'mortality', 'death'. Searches were completed up to December 2007 to identify published reports from observational ART cohorts in sub-Saharan Africa; those reporting on survival proportions over time and those describing the spectrum of causes of death were selected. Additional articles were identified from references in published papers and abstracts from major international AIDS conferences in the preceding 12 months. For cohorts with multiple presentations of mortality data from different time periods, the most recent report was used. Data from controlled clinical trials were not included in the assessment of mortality rates as these data are unlikely to be generalizable to the scale-up of ART services in the general population. Summary estimates of the hazard ratios for the association of early mortality with CD4 cell count and with advanced WHO stage was conducted using a random-effects model [19].

## Rates and temporal distribution of mortality

Data from 18 published cohort studies containing 39 536 patients treated in countries in west, east and southern Africa are summarized in Table 1 [20]. Patients were mainly receiving public sector treatment. Twelve of the cohorts were based in urban settings and six were rural. The median baseline CD4 cell count in these studies ranged between 43 and 147 cells/ $\mu$ l, and the median duration of follow-up ranged between 3 and 46 months. The vast majority of these patients were ART-naive, and most initiated triple-drug therapy that incorporated two nucleoside analogues and a nonnucleoside reverse transcriptase inhibitor.

Using product-limit methods, the 12-month survival proportion in patients who were not lost to follow-up ranged between 0.74 and 0.92, with the greatest burden of mortality occurring during the initial months of ART (Table 1). Heterogeneity in outcomes between programmes may reflect differences in both baseline patient characteristics and programme characteristics [21]. Survival proportions were reported at both 12 and 24 months of follow-up in nine studies and these

**Table 1. Mortality among adults accessing antiretroviral treatment programmes in sub-Saharan Africa.**

Study	Year	Country	n	Setting	Median (IQR) CD4 cell count (cells/ $\mu$ l)	Median follow-up (months)	Survival proportion				Temporal distribution of deaths	Losses to follow-up
							On-treatment (months)		At 12 months of ART			
							12	24	<50 <sup>a</sup>	>50 <sup>a</sup>		
Weidle <i>et al.</i> [26]	2002	Uganda	476	Urban	73 (15–187)	3	0.74	–	0.67	0.82	57% deaths in first 3 months	24%
Djomand <i>et al.</i> [31]	2003	Cote D'Ivoire	480	Urban	[37% <50]	6	0.84	–	–	–	–	Not reported
Seyler <i>et al.</i> [32]	2003	Cote D'Ivoire	101	Urban	135 (55–221)	17	–	–	0.80	0.96	50% deaths in first 3.3 months	Not reported
Coetzee <i>et al.</i> [10]	2004	S. Africa	287	Urban	43 (13–94)	13.9	0.86	0.86	0.82	0.91	71% deaths in first 3 months	2%
Laurent <i>et al.</i> [41]	2005	Senegal	176	Urban	144 (58–224)	30	–	0.84	–	–	Median time to death 9 months	Not reported
Wester <i>et al.</i> [11]	2005	Botswana	153	Urban	96 (33–165)	12	0.85	–	0.76	0.90	Majority of deaths in first 6 months	8% <sup>c</sup>
Lawn <i>et al.</i> [23]	2006	S. Africa	927	Urban	100 (47–160)	7	0.91	0.90	0.85	0.94	87% between enrolment and first 4 months ART	2%
Ferradini <i>et al.</i> [25]	2006	Malawi	1308	Rural	112 (59–176)	8.3	0.81	0.72	–	–	77% deaths in first 6 months	5% <sup>c</sup>
Etard <i>et al.</i> [24]	2006	Senegal	404	Urban	128 (54–127)	46	0.88	0.83	0.80	0.90	50% deaths in first 12 months	2% at 1 year
Stringer <i>et al.</i> [6]	2006	Zambia	16198	Urban	147 (69–268)	7	0.82	–	0.80	–	71% within first 3 months	Not reported
Zachariah <i>et al.</i> [37]	2006	Malawi	1507	Rural	123 (58–206)	10 <sup>b</sup>	0.87	–	0.77	0.92	61% in first 3 months; 79% in first 6 months	3%
Makombe <i>et al.</i> [20]	2007	Malawi	4580	Rural	–	12	0.87	–	–	–	>90% in first 6 months	11% at 1 year
Bajunirwe <i>et al.</i> [39]	2007	Uganda	398	Rural	–	–	0.76	0.71	–	–	–	Not reported
De Iaco <i>et al.</i> [34]	2007	Burkina Faso	315	Urban	97	18	–	–	0.69	0.83	Mortality rate 2.3-fold higher in first 6 months ART	Not reported
Johannessen <i>et al.</i> [38]	2007	Tanzania	336	Rural	–	12	0.74	0.68	–	–	60% deaths in first 3 months	11%
Kambugu <i>et al.</i> [52]	2007	Uganda	559	Urban	104	12	0.86	–	–	–	73% in first 6 months	Not reported
Moore <i>et al.</i> [40]	2007	Uganda	1120	Rural	127	24	0.92	0.91	–	–	68% in first 6 months	Not reported
Toure <i>et al.</i> [8]	2008	Cote D'Ivoire	10211	Urban	123 (47–207)	7.7	–	–	0.76	>0.86	75% in first 4.6 months	19% <sup>c,d</sup>

ART, antiretroviral therapy; IQR, interquartile range.

<sup>a</sup>CD4 cell count (cells/ $\mu$ l).

<sup>b</sup>Mean (SD).

<sup>c</sup>At 12 months. Kaplan–Meier estimate.

<sup>d</sup>Total losses at 12 months.

showed that mortality accruing in the second year of ART was much less than that in the first (Table 1).

Longitudinal changes in mortality rates were calculated in some studies [21–24]. In a South African cohort, the rate in the first 4 months of ART was 19.1 deaths/100 person-years (100PYs), decreasing to 2.9 deaths/100PYs beyond 4 months and 1.3 deaths/100PYs beyond 1 year [23]. A similar pattern of mortality was observed in another South African cohort [10], and in both studies, rates of viral load suppression of less than 400 copies/ml were high (>93% and >89%) [10,23]. In other studies, however, substantial mortality accrued between 12 and 24 months of follow-up [24,25]. Mortality rates in a cohort in Senegal, for example, were 12.5, 6.6 and 4.5 deaths/100PYs in the first, second and third years of treatment, respectively [24]. The higher mortality rates beyond the first year of ART in these studies might be explained by lower rates of virological suppression and associated poor immunological recovery, for example [24,26].

In all 18 cohorts (Table 1), the mortality proportions at 12 months of follow-up (range 8–26%) exceeded the ART–LINC summary mortality estimate of 6.4% [95% confidence interval (CI), 5.1–7.7] [12]. The ART–LINC estimate was derived from 4810 patients receiving ART between 2001 and 2004 in resource-limited settings and included 3449 patients in sub-Saharan Africa. Since then, there has been a more than 10-fold increase in the number of patients receiving ART in the region whose outcomes have been published. The current literature included in this review suggests that further updated collaborative analyses might show a substantially higher early-mortality rate than initially derived from the original ART–LINC cohorts.

### Reliability of mortality data

There may be a tendency for mortality rates in the published literature to be lower than those observed in most large-scale ART programmes that have not published their data because of selective reporting from well run ART programmes in urban settings with more intensive service delivery and fewer resource constraints. The quality of mortality data is unclear in some reports; mortality is likely to be underestimated to a degree by most cohorts due to misclassification of unascertained patient deaths as losses to follow-up. The greater the loss to follow-up rate the greater the potential for misclassifications. Rates of loss to follow-up differed greatly between studies, ranging between 2 and 24% (Table 1), and unrecorded mortality among these patients may only be detected by intensive active follow-up [12,27–29]. The efficacy of active follow-up may vary considerably between cohorts and details

concerning the intensity of patient tracing are infrequently reported.

Analysis of the characteristics of losses to follow-up may provide insights into the reliability of programme mortality data. ART cohorts in South African and Cote D'Ivoire with good ascertainment of outcomes found that, whereas most deaths occurred in the first months of ART in patients with the lowest baseline CD4 cell counts, losses to follow-up were evenly distributed over time and were not associated with CD4 cell counts [8,23]. Thus, if a programme reports a high loss to follow-up rate in the first months of ART among patients with the lowest baseline CD4 cell counts, this may be suggestive of high rates of unascertained deaths in this period.

### In-programme mortality prior to starting anti-retroviral therapy

Very high mortality rates recorded during the initial months of ART may reflect a high mortality rate among individuals who are eligible for ART but have yet to start treatment. This includes individuals enrolled in care who are awaiting treatment as well as those elsewhere in the healthcare system awaiting referral to HIV treatment services.

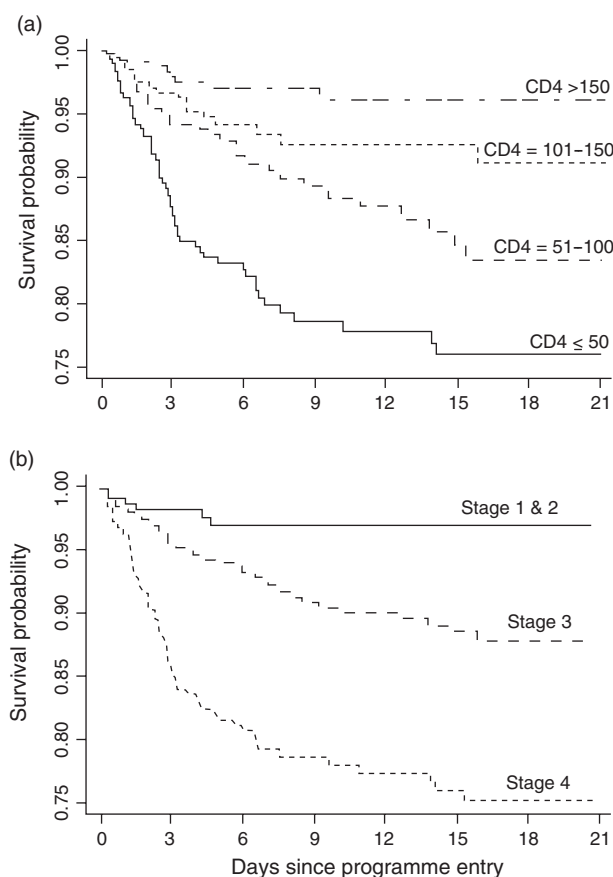
Two cohorts in South Africa have reported on deaths occurring in the interval between enrolment of patients into the ART programme and initiation of treatment [22,23,30]. In the Cape Town study, this interval of approximately 30 days permitted thorough investigation and treatment of coinfections and preparation of patients for ART, the mortality rate in this interval was very high (approximately 30 deaths/100PYs). Deaths occurring in this short period accounted for 67% of deaths within the first 3 months from programme enrolment [22]. Similarly, in the Free State cohort, 87% of deaths occurred among patients prior to ART initiation [30]. Thus, it is likely that even short delays in ART initiation are associated with considerable pretreatment mortality risk. Delays in patient referral, waiting lists for ART initiation and time taken to prepare patients to start life-long treatment are likely to contribute to overall mortality risk.

Such delays and associated mortality are not typically reported by cohorts and so the optimum period for preparation for ART is therefore unclear. How to balance the need for thorough preparation of patients for life-long therapy with the high risk of death among individuals waiting to start therapy requires urgent research attention. Clearly, flexibility in timing is needed as many patients with advanced immunodeficiency need therapy urgently.

## Risk factors for mortality

Of the cohorts summarized in Table 1, low baseline CD4 cell count was a strong risk factor for early mortality in all those with available data. The summary hazard ratio for the association between CD4 count of less than 50 cells/ $\mu\text{l}$  (versus CD4 >50 cells/ $\mu\text{l}$ ) was 2.5 (95% CI, 1.9–3.2) in studies with data presented in this format [10,11,22,25,26,31,32]. A graded association with CD4 cell count was reported in some studies [6,12,23,33] (Fig. 1a) but baseline viral load was not found to be an independent risk factor in any of them.

Symptomatic disease (WHO stages 3 and 4) was associated with mortality in some [6,8,12,22,34] but not all [11,22] studies (Fig. 1b), possibly reflecting



**Fig. 1.** Kaplan–Meier plot showing survival proportion over 21 months among patients ( $n = 1235$ ) from the time of entering a community-based antiretroviral treatment programme in South Africa. The period covered includes the interval between programme enrolment and ART initiation – a median of 33 days. The survival proportions are shown according to baseline CD4 cell count and baseline WHO clinical stage. The graphs show the strong unadjusted association between CD4 cell count, WHO clinical stage and mortality risk in the first year of ART and the low mortality risk in the second year. ART, antiretroviral treatment. Adapted from [23].

differences in the accuracy of clinical staging or homogeneity of cohorts with respect to this variable. WHO stage 4 disease, however, was found to be a strong predictor of mortality in all studies reporting on this [6,22,23,25,31,35–39]. In three studies comparing patients with WHO stage 4 disease at baseline with those with WHO stages 1–3, WHO stage 4 was associated with more than a doubling in the hazard of death (summary hazard ratio, 2.2; 95% CI, 1.5–3.2) [10,21,31].

Low body mass index [6,8,24,25,35,37,38,40] and anaemia [6,8,25,38,40,41] were independently associated with mortality in some studies. Anaemia may be associated with a variety of conditions such as extrapulmonary tuberculosis (TB), gastrointestinal Kaposi's sarcoma and severe malnutrition or may reflect the direct effects of advanced HIV on haematopoiesis. Male sex was associated with poorer survival in six studies [6,8,10,23,25,39]; the reasons for this are unknown, but could relate to differences in health-seeking behaviour or poorer treatment adherence among men [42].

In contrast to data from high-income settings [2], increasing age was associated with higher mortality risk in only one cohort [8]. The lack of an association may reflect the younger and narrower age distribution of patients receiving ART in Africa. Alternatively, this may simply reflect the relatively short duration of follow-up in these studies since immunological recovery during the first 4 months of treatment is not age-dependent whereas long-term recovery is [43–45].

Patients with TB at enrolment to ART programmes have a high mortality risk [46,47], and yet, paradoxically, TB and TB disease activity have not been found to be independent risk factors for mortality during ART [6,37,48]. Many deaths, however, may occur before ART is initiated [48,49], and also much of the true burden of disease may remain unascertained [50]. In contrast to TB, detection of cryptococcal antigen in serum was an independent predictor of early mortality in a rural cohort in Uganda [51].

Although the type of ART regimen and healthcare facility (primary versus secondary) have not been found to be associated with mortality [8,12,24–26], programmes in which patients were required to pay for medication were associated with a four-fold greater mortality risk [12]. This concurs with the findings of a meta-analysis of treatment outcomes in resource-poor settings; due to limitations in finances, patients who had to pay part or all the cost of therapy had an approximately 30% lower probability of having an undetectable viral load at 6 and 12 months compared with patients whose medication was supplied free of charge [13]. In keeping with this, ART adherence has been found to be predictive of mortality [40,42].

Risk factors for mortality may alter during the course of ART. Whereas mortality during the first 4 months of treatment in one cohort was associated with patient characteristics at baseline, mortality beyond this time point was only associated with the updated absolute CD4 cell count at 4 months and with failure of viral load suppression [23]. These data suggest that the key long-term determinant of mortality is the response to ART as also suggested by more recent findings from Abidjan [35].

## Causes of death

Five observational cohort studies from a range of countries in sub-Saharan Africa report on the spectrum of causes of early deaths [22,24,37,40,52]. The most important causes of death reported include TB, acute sepsis, cryptococcal meningitis, malignancies (especially Kaposi's sarcoma) and chronic diarrhoea or wasting syndrome.

Diagnostic facilities are limited in many settings, especially for rural cohorts, and no identifiable cause could be identified in a proportion of deaths. No systematic post-mortem studies of deaths during ART have been reported and the overall data are therefore limited. Deaths in the first few weeks of ART are likely to be caused by conditions that are either preexisting at programme enrolment or new conditions arising in the context of persisting immunodeficiency. In one study, causes of death during the first 4 months of ART were found to reflect those occurring just prior to ART with the addition of deaths due to immune reconstitution disease associated with cryptococcal meningitis and TB [22].

TB was among the two leading causes of death in four of the five cohorts, accounting for up to 21% of deaths [22,24,40,52]. However, TB is likely to be an under-reported cause of death. Post-mortem studies in the pre-ART period have found that up to 54% of untreated patients dying from AIDS in Africa have evidence of occult disseminated TB [53,54], and that this may be a common underlying cause of 'slim disease' [55]. Although wasting syndrome (defined as wasting with unexplained fever or chronic diarrhoea or both) was specifically reported as an important cause of death among in only one cohort [22], this may have been more common as 'chronic diarrhoea' was also reported as a common cause [37], and wasting was a common risk factor for mortality in many cohorts (see earlier).

The contribution of TB immune reconstitution disease to mortality has yet to emerge fully [56]. Although most cases appear to be self-limiting, a minority are severe, and deaths have been reported from cohorts in South Africa and Thailand [57,58]. However, background mortality

rates were also very high among TB patients who did not develop this complication, and neither of the studies found immune reconstitution disease to be associated with a significantly excess mortality risk. Larger prospective studies are needed to clarify this issue.

Cryptococcal meningitis was among the two leading causes of mortality in four of the five cohorts [22,24,40,52], accounting for up to 20% of deaths. Many of the deaths from cryptococcal disease in a South African cohort were attributed to immune reconstitution disease [59] and this was a more common cause of death than TB immune reconstitution disease [22]. Many patients developing this complication have previously been treated for cryptococcal meningitis with fluconazole monotherapy [22,59,60]. Although this is the standard of care throughout much of Africa, fluconazole is a fungistatic drug with far less efficacy than amphotericin in clearing the organism from cerebrospinal fluid (CSF) and especially so in the context of fluconazole resistance [61]. Persistence of cryptococci or cryptococcal antigen in the CSF is likely to predispose patients to immune reconstitution disease, which has a high mortality risk [59,60,62,63].

Kaposi's sarcoma and other malignancies were among the three leading causes of death in three of the five cohorts [22,37,52], accounting for up to 14% of deaths. Acute sepsis was another important cause identified in some cohorts despite widespread use of trimethoprim-sulphamethoxazole (cotrimoxazole) [22,40]. Acute respiratory disease, acute gastroenteritis or systemic sepsis with no identifiable focus were the most common forms of sepsis and collectively sepsis accounted for up to 19% of deaths. *Pneumocystis jirovecii* pneumonia was reported in up to 9% of deaths in two Ugandan studies [40,52] but the basis for these diagnoses is not clear.

Microbiological causes of death from acute bacterial infections have not been reported. In studies of acute sepsis during cotrimoxazole prophylaxis in Abidjan, Cote D'Ivoire [32,64–66], the predominant pathogens were nontyphoidal salmonella, *Escherichia coli*, *Shigella* spp. and *Streptococcus pneumoniae*. Although high rates of cotrimoxazole resistance among nontyphoidal salmonellae and pneumococcal isolates have been reported in Uganda and Malawi [67,68], prophylaxis with this drug is still effective in reducing mortality in both countries [68,69].

The most widely used regimens in Africa include stavudine (d4T) and nevirapine, which have the potential for serious toxicities that include hepatotoxicity, Stevens–Johnson syndrome and lactic acidosis [70,71]. However, drug toxicity does not appear to be a major cause of early mortality. Among 226 deaths reported by four cohorts, seven (3.1%) were attributed to ART toxicity [10,22,24,52]. These were comparatively well resourced

programmes with access to biochemical laboratory monitoring; mortality rates may be higher where monitoring is not possible. Analysis of the temporal distribution of drug substitutions due to toxicity shows that nevirapine and zidovudine toxicity occur during the first few months of ART, whereas d4T-associated lactic acidosis occurs cumulatively from around 6 months onwards [72,73]. Thus, the contribution of drug toxicity to overall mortality may change over time and may proportionately increase as the risk of opportunistic infections diminishes after the first 6 months of ART.

Deaths associated with nevirapine-induced hepatotoxicity have been reported from South Africa when used concurrently with rifampicin [70], but more data from large cohorts are needed to quantify the risk during concurrent TB treatment. In contrast, efavirenz is very well tolerated [65], and simultaneous use of rifampicin and efavirenz in cohorts in South Africa has not been associated with mortality [48,74].

## Strategies to reduce mortality

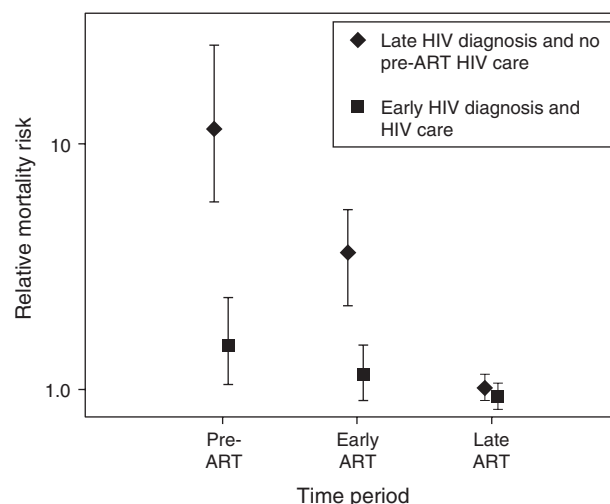
Early mortality rates are strongly associated with the degree of immunodeficiency in patients at the time they enrol into ART programmes. Strategies to reduce mortality must therefore focus not only on delivery of care within ART programmes but more fundamentally they must promote early HIV diagnosis and improved pre-ART HIV care.

- (1) Early HIV diagnosis and longitudinal HIV care pre-ART
  - (a) Promote HIV testing and early diagnosis.
  - (b) Strengthen long-term HIV care services for patients prior to ART eligibility.
  - (c) Optimize prevention, screening and treatment of opportunistic infections.
  - (d) Provide longitudinal clinical and CD4 cell count monitoring to facilitate timely initiation of ART.
  - (e) Minimize health system delays in ART initiation.
- (2) Delivery of ART
  - (a) Provide ART without charge to the patient.
  - (b) Use updated WHO guidelines for ART eligibility.
  - (c) Develop locally effective ART adherence strategies.
  - (d) Use ART regimens with lower toxicity.
  - (e) Opportunistic infections
    - (i) Cotrimoxazole prophylaxis during ART.
    - (ii) Optimize screening for TB at ART programme entry.
    - (iii) Optimize diagnosis and management of TB immune reconstitution disease.
    - (iv) Prevent nosocomial transmission of TB.

- (v) Consider concurrent isoniazid preventive therapy (IPT) during ART to reduce long-term TB incidence (trial data awaited).
- (vi) Optimize prevention, diagnosis and treatment of cryptococcal meningitis and immune reconstitution disease.
- (f) Use of laboratory monitoring
  - (i) Laboratory monitoring for drug toxicity.
  - (ii) Define appropriate strategies for monitoring response to ART.

## Early HIV diagnosis and longitudinal HIV care

Patients entering ART programmes in sub-Saharan Africa have typically had their HIV diagnosis made following presentation to the health services with advanced symptomatic disease. Such patients have a high mortality risk in the period leading up to ART as well as during early ART (Fig. 2). Provision of accessible and user-friendly services for serial voluntary counselling and testing (VCT) and CD4 cell count estimation is vital to promote early HIV diagnosis and assessment of ART eligibility. Early diagnosis and initiation of appropriate longitudinal care would probably be associated with much lower mortality risk in the period leading up to ART as well as during the initial months of ART (Fig. 2).



**Fig. 2. Hypothetical graph showing relative mortality risk (95% confidence interval) among patients accessing antiretroviral treatment with late HIV diagnoses and advanced symptomatic disease (diamonds) compared to patients whose HIV was diagnosed early and who received appropriate longitudinal HIV care and timely referral for antiretroviral treatment (squares).** Mortality risk is shown broken down into 3 periods: pre-ART (the interval between enrolment in the ART programme and the time ART is started), early ART (first 4 months of ART) and late ART (beyond 4 months of ART). ART, antiretroviral treatment. Data on patients with late diagnoses are based on [23] and data from patients with early diagnoses and care are hypothetical, being based approximately on data from [23,33,82].

Similar to the management of many chronic diseases in Africa, longitudinal care from the time of HIV diagnosis until requirement for ART is often poor. Thus, even those patients who are diagnosed with relatively early HIV infection are often lost to medical care only to later re-enter medical services with advanced disease. Longitudinal care must be strengthened and should include screening for and treatment of opportunistic infections, initiation of cotrimoxazole prophylaxis, isoniazid preventive therapy (IPT), reproductive healthcare, and serial CD4 cell count assessment until eligibility for ART is reached. This will require strengthening of HIV care services and more widespread availability of CD4 cell count measurement.

Prevention, screening and management of opportunistic infections are needed throughout the HIV care pathway. Cotrimoxazole prophylaxis should be initiated after HIV diagnosis and continued during ART [75], as this is associated with additional gains in life expectancy [16,76]. Isoniazid preventive therapy (IPT) is an underused intervention in Africa [77]. Key obstacles include the difficulty of excluding active TB in patients with moderate or advanced immunodeficiency. IPT would therefore be more easily used among patients with less advanced disease, and yet, adherence to treatment among such patients and the infrastructure to efficiently deliver and monitor IPT remain a challenge.

### Delivery of anti-retroviral therapy

National ART programme criteria for ART eligibility require ongoing re-evaluation. Initial WHO guidelines (2002) for resource-poor settings recommended treatment only for those with stage 4 disease or a CD4 cell count of less than 200 cells/ $\mu$ l [78]. These were modified in 2003 [79] and 2006 [80], bringing them closer to guidelines for high-income settings. However, some national programmes had earlier retained more restrictive eligibility criteria. For example, South Africa's national programme has retained the 2002 WHO recommendations despite the fact that under these guidelines much of HIV-associated morbidity and mortality occurs prior to eligibility for ART [81,82]. Studies on when to initiate ART in resource-limited settings are needed. There are currently two trials that aim to address this issue in Cote D'Ivoire and Haiti (<http://clinicaltrials.gov/ct2/show/NCT00120510?term=NCT00120510&rank=1>, <http://clinicaltrials.gov/ct2/show/NCT00495651?term=Temprano&rank=1>).

As soon as patients are identified as being eligible for ART, prompt referral for ART should be made. Where possible, waiting lists for ART should be minimized and those with highest risk might be prioritized [22,24]. Supply of medication free of charge to the patient is a key issue [12,13]. While some international agencies advocate the privatization of health services and private financing

of health services through user fees, this is very unrealistic for most patients living in resource-limited settings who require life-long ART.

The use of regimens in Africa with higher toxicity than those used in the West is due to their low cost and the availability of fixed dose combination formulations. Although provision of treatment to the millions of people living with HIV/AIDS who do not yet have treatment access should be the priority, implementation of less toxic regimens is nevertheless desirable.

Although laboratory monitoring and use of point-of-care lactic acid meters may help detect and manage drug adverse effects, no data yet exist to indicate that provision of such monitoring reduces mortality risk. This issue is being studied in the Development of AntiRetroviral Therapy in Africa trial (DART, <http://www.ctu.mrc.ac.uk/dart/summary.asp>). Braitstein *et al.* [12] found no impact of viral load monitoring on mortality in the first year of ART. However, any benefits are only likely to occur during long-term treatment rather than during the first year.

Effective strategies to screen for active TB at entry to ART programmes need to be developed, including detection of the high prevalence of both clinical and sub-clinical disease [46,47,83,84]. Prompt initiation of TB treatment may reduce patient mortality and reduce risks of nosocomial TB transmission. The optimal timing for initiation of ART among TB patients remains unknown and randomized controlled trials of early versus delayed initiation of ART is currently underway [85]. Similar to data from the UK [86,87], observational data from South Africa strongly suggest that expedited initiation of treatment is needed among those with baseline CD4 cell count of less than 100 cells/ $\mu$ l in this setting in view of their exceptionally high mortality rate while awaiting ART [88,89].

Randomized controlled trials are needed to define both the optimal management of moderate and severe TB immune reconstitution disease [56] and to assess the efficacy of concurrent isoniazid prophylaxis in reducing the high rates of TB that persist during ART [46,90]. In addition, the utility of pre-ART screening for and management of asymptomatic cryptococcal antigenaemia has yet to be defined [51]. Provision of a better standard of care for cryptococcal meningitis using amphotericin might be considered in settings with adequate facilities to administer this drug safely. Guidelines for the prevention, diagnosis and management of cryptococcal immune reconstitution disease are also needed.

Despite early reports that treatment adherence does not pose a major barrier to treatment success in sub-Saharan Africa [91], more recent research suggests that overall adherence rates and retention on ART in sub-Saharan



Africa are quite variable and often poor [18,92]. Adherence is predictive of mortality [42] and development of locally appropriate strategies to promote adherence are central to the success of ART programmes. Research is also needed to determine which cadre of health-care professional is needed to deliver ART effectively with good outcomes.

## Conclusion

High early mortality within ART programmes in sub-Saharan Africa has emerged as a key challenge. Between 8 and 26% of patients die in the first year of ART and key issues surrounding this problem are summarized as follows:

- (1) Although virological and immunological responses to ART are similar in patients living in high-income and resource-limited countries, early mortality rates are much higher.
- (2) Most deaths occur in the first few months of ART.
- (3) A high loss to follow-up rate may conceal true mortality rates.
- (4) High mortality rates during early ART also reflect high mortality rates in the period preceding ART.
- (5) Key risk factors for early mortality include low CD4 cell count, advanced clinical stage of disease, and the need for patients to pay for treatment.
- (6) Early deaths largely reflect the spectrum of causes of death prior to ART initiation plus immune reconstitution disease.
- (7) Common causes of death are TB, acute sepsis, cryptococcal meningitis malignancies and wasting syndrome.
- (8) Drug adverse effects are a relatively minor cause of early mortality.
- (9) Strategies to reduce early mortality include promotion of early HIV diagnosis, strengthening of the patient care pathway pre-ART, timely initiation of ART, provision of ART free of charge to the patient, adherence support, and optimal prevention, screening and management of opportunistic infections.

Early death rates threaten the credibility of ART delivery among communities accessing such therapy and among health workers who are responsible for providing this care. Although many factors are likely to contribute to this mortality, an over-riding issue is that patients typically present for ART once they have developed advanced symptomatic disease. Much may be done within ART services to potentially reduce this mortality by providing medication free of charge, implementing effective screening, treatment and prevention of opportunistic infections, reinforcing treatment adherence and using regimens with low toxicity. However, despite optimizing ART delivery, a proportion of early deaths among patients with very advanced disease are not likely to be preventable. Thus, a more fundamental issue and the greater challenge is the need for early HIV diagnosis and

provision of appropriate longitudinal HIV care prior to ART eligibility.

## Acknowledgements

S.D.L is funded by the Wellcome Trust, London, UK, with grant 074641/Z/04/Z. R.W. is funded in part by the National Institutes of Health, USA, RO1 grant (A1058736-01A1) and a CIPRA grant 1U19AI53217-01. X.A. is funded in part by the ANRS (Agence nationale de recherches sur le SIDA et les hépatites virales, Paris, France (grant ANRS 1269).

S.D.L. conceptualized and outlined the review with input from R.W. S.D.L. did the literature searches and drafted the manuscript. L.M. calculated the summary hazard estimates. A.D.H., X.A., L.M. and R.W. all provided critical input and helped redraft the manuscript into its final form.

## References

1. Palella FJ Jr, Delaney KM, Moorman AC, Loveless MO, Fuhrer J, Satten GA, *et al.* **Declining morbidity and mortality among patients with advanced human immunodeficiency virus infection. HIV Outpatient Study Investigators.** *N Engl J Med* 1998; **338**:853–860.
2. Egger M, May M, Chene G, Phillips AN, Ledergerber B, Dabis F, *et al.* **Prognosis of HIV-1-infected patients starting highly active antiretroviral therapy: a collaborative analysis of prospective studies.** *Lancet* 2002; **360**:119–129.
3. Mocroft A, Ledergerber B, Katlama C, Kirk O, Reiss P, d'Arminio MA, *et al.* **Decline in the AIDS and death rates in the EuroSIDA study: an observational study.** *Lancet* 2003; **362**:22–29.
4. UNAIDS/WHO. AIDS epidemic update 2007. [http://data.unaids.org/pub/EPISlides/2007/2007\\_epiupdate\\_en.pdf](http://data.unaids.org/pub/EPISlides/2007/2007_epiupdate_en.pdf).
5. World Health Organization. Towards universal access: scaling up priority HIV/AIDS interventions in the health sector: progress report; April 2007. Geneva: WHO. <http://www.who.int/hiv/toronto2006/towardsuniversalaccess.pdf>. [Accessed 24 April 2007]
6. Stringer JS, Zulu I, Levy J, Stringer EM, Mwangi A, Chi BH, *et al.* **Rapid scale-up of antiretroviral therapy at primary care sites in Zambia: feasibility and early outcomes.** *JAMA* 2006; **296**:782–793.
7. Harries AD, Schouten EJ, Libamba E. **Scaling up antiretroviral treatment in resource-poor settings.** *Lancet* 2006; **367**:1870–1872.
8. Toure S, Kouadio B, Seyler C, Traore M, Dakoury-Dogbo N, Duvignac J, *et al.* **Rapid scaling-up of antiretroviral therapy in 10 000 adults in Cote D'Ivoire: two-year outcomes and determinants.** *AIDS* (in press).
9. Bekker LG, Myer L, Orrell C, Lawn S, Wood R. **Rapid scale-up of a community-based HIV treatment service: programme performance over 3 consecutive years in Guguletu, South Africa.** *S Afr Med J* 2006; **96**:315–320.
10. Coetzee D, Hildebrand K, Boule A, Maartens G, Louis F, Labatala V, *et al.* **Outcomes after two years of providing antiretroviral treatment in Khayelitsha, South Africa.** *AIDS* 2004; **18**:887–895.
11. Wester CW, Kim S, Bussmann H, Avalos A, Ndwapu N, Peter TF, *et al.* **Initial response to highly active antiretroviral therapy in HIV-1C-infected adults in a public sector treatment program in Botswana.** *J Acquir Immune Defic Syndr* 2005; **40**:336–343.

12. Braitstein P, Brinkhof MW, Dabis F, Schechter M, Boulle A, Miotti P, *et al*. **Mortality of HIV-1-infected patients in the first year of antiretroviral therapy: comparison between low-income and high-income countries.** *Lancet* 2006; **367**:817–824.
13. Ivers LC, Kendrick D, Doucette K. **Efficacy of antiretroviral therapy programs in resource-poor settings: a meta-analysis of the published literature.** *Clin Infect Dis* 2005; **41**:217–224.
14. Badri M, Maartens G, Mandalia S, Bekker LG, Penrod JR, Platt RW, *et al*. **Cost-effectiveness of highly active antiretroviral therapy in South Africa.** *PLoS Med* 2006; **3**:e4.
15. Badri M, Cleary S, Maartens G, Pitt J, Bekker LG, Orrell C, *et al*. **When to initiate highly active antiretroviral therapy in sub-Saharan Africa? A South African cost-effectiveness study.** *Antivir Ther* 2006; **11**:63–72.
16. Goldie SJ, Yazdanpanah Y, Losina E, Weinstein MC, Anglaret X, Walensky RP, *et al*. **Cost-effectiveness of HIV treatment in resource-poor settings – the case of Cote d'Ivoire.** *N Engl J Med* 2006; **355**:1141–1153.
17. WHO/UNAIDS. Press release: HIV infection rates decreasing in several countries but global number of people living with HIV continues to rise; November 2005. <http://www.who.int/hiv/epiupdate2005/en/print.html>. [Accessed 27 March 2006].
18. Rosen S, Fox MP, Gill CJ. **Patient retention in antiretroviral therapy programs in sub-Saharan Africa: a systematic review.** *PLoS Med* 2007; **4**:e298.
19. DerSimonian R, Laird N. **Meta-analysis in clinical trials.** *Control Clin Trials* 1986; **7**:177–188.
20. Makombe SD, Harries AD, Yu JK, Hochgesang M, Mhango E, Weigel R, *et al*. **Outcomes of tuberculosis patients who start antiretroviral therapy under routine programme conditions in Malawi.** *Int J Tuberc Lung Dis* 2007; **11**:412–416.
21. El-Sadr W, Elul B, Hawken M, Lima J, Macharaia D, Oluyden B, *et al*. **HIV care and treatment in resource-limited settings: challenges and outcomes.** *Programme & Abstracts of the 14th Conference on Retroviruses and Opportunistic Infections*; 25–28 February 2007; Los Angeles [abstract 534].
22. Lawn SD, Myer L, Orrell C, Bekker LG, Wood R. **Early mortality among adults accessing a community-based antiretroviral service in South Africa: implications for programme design.** *AIDS* 2005; **19**:2141–2148.
23. Lawn SD, Myer L, Harling G, Orrell C, Bekker LG, Wood R. **Determinants of mortality and nondeath losses from an antiretroviral treatment service in South Africa: implications for program evaluation.** *Clin Infect Dis* 2006; **43**:770–776.
24. Etard JF, Ndiaye I, Thierry-Mieg M, Gueye NF, Gueye PM, Lanièce I, *et al*. **Mortality and causes of death in adults receiving highly active antiretroviral therapy in Senegal: a 7-year cohort study.** *AIDS* 2006; **20**:1181–1189.
25. Ferradini L, Jeannin A, Pinoges L, Izopet J, Odhiambo D, Mankhambo L, *et al*. **Scaling up of highly active antiretroviral therapy in a rural district of Malawi: an effectiveness assessment.** *Lancet* 2006; **367**:1335–1342.
26. Weidle PJ, Malamba S, Mwebaze R, Sozi C, Rukundo G, Downing R, *et al*. **Assessment of a pilot antiretroviral drug therapy programme in Uganda: patients' response, survival, and drug resistance.** *Lancet* 2002; **360**:34–40.
27. Anglaret X, Toure S, Gourvellec G, Tchehy A, Zio L, Zaho M, *et al*. **Impact of vital status investigation procedures on estimates of survival in cohorts of HIV-infected patients from Sub-Saharan Africa.** *J Acquir Immune Defic Syndr* 2004; **35**:320–323.
28. Yu JK, Chen SC, Wang KY, Chang CS, Makombe SD, Schouten EJ, *et al*. **True outcomes for patients on antiretroviral therapy who are "lost to follow-up" in Malawi.** *Bull World Health Organ* 2007; **85**:550–554.
29. Bisson G, Ndwapi N, Rollins C, Avalos A, Gross R, Bellamy S, *et al*. **High rates of death among patients lost to follow-up in Botswana's National ART Program: implications for monitoring and evaluation.** *Programme & Abstracts of the 14th Conference on Retroviruses and Opportunistic Infections*; 25–28 February 2007; Los Angeles [abstract 537].
30. Fairall LR, Bachmann MO, Louwagie GM, van Vuuren C, Chikobvu P, Steyn D, *et al*. **Effectiveness of antiretroviral treatment in a South African program: a cohort study.** *Arch Intern Med* 2008; **168**:86–93.
31. Djomand G, Roels T, Ellerbrock T, Hanson D, Diomande F, Monga B, *et al*. **Virologic and immunologic outcomes and programmatic challenges of an antiretroviral treatment pilot project in Abidjan, Cote d'Ivoire.** *AIDS* 2003; **17** (Suppl 3):S5–S15.
32. Seyler C, Anglaret X, Dakoury-Dogbo N, Messou E, Toure S, Danel C, *et al*. **Medium-term survival, morbidity and immunovirological evolution in HIV-infected adults receiving antiretroviral therapy, Abidjan, Cote d'Ivoire.** *Antivir Ther* 2003; **8**:385–393.
33. Badri M, Bekker LG, Orrell C, Pitt J, Cilliers F, Wood R. **Initiating highly active antiretroviral therapy in sub-Saharan Africa: an assessment of the revised World Health Organization scaling-up guidelines.** *AIDS* 2004; **18**:1159–1168.
34. De Iaco G, Zombre M, Carvalho AC, Capone S, Some E, Pietra V, *et al*. **Factors predicting early death in a cohort of patients with HIV/AIDS in Burkina Faso: the need for earlier diagnosis and antiretroviral treatment (ART).** *Abstracts of the 4th IAS Conference on HIV Pathogenesis, Treatment and Prevention*; July 2007. Sydney, Australia: International AIDS Society. [abstract WEPEB053].
35. Moh R, Danel C, Messou E, Ouassa T, Gabillard D, Anzian A, *et al*. **Incidence and determinants of mortality and morbidity following early antiretroviral therapy initiation in HIV-infected adults in West Africa.** *AIDS* 2007; **21**:2483–2491.
36. Jerene D, Endale A, Hailu Y, Lindtjorn B. **Predictors of early death in a cohort of Ethiopian patients treated with HAART.** *BMC Infect Dis* 2006; **6**:136.
37. Zachariah R, Fitzgerald M, Massaquoi M, Pasulani O, Arnould L, Makombe S, *et al*. **Risk factors for high early mortality in patients on antiretroviral treatment in a rural district of Malawi.** *AIDS* 2006; **20**:2355–2360.
38. Johannessen A, Naman E, Matee M, Gundersen SG, Bruun JN. **Risk factors for early mortality on antiretroviral treatment in a rural hospital in Tanzania.** *Abstracts of the 4th IAS Conference on HIV Pathogenesis, Treatment and Prevention*; July 2007. Sydney, Australia: International AIDS Society [abstract WEPEB054].
39. Bajunirwe F, Arts EJ, Tisch DJ, Debanne SM, Sethi AK. **Survival, adherence to care and antiretroviral treatment (ART) among HIV-infected adults in rural Western Uganda.** *Abstracts of the 4th IAS Conference on HIV Pathogenesis, Treatment and Prevention*; July 2007. Sydney, Australia: International AIDS Society [abstract WEPEB049].
40. Moore D, Yiannoutsos C, Musick B, Downing R, Were W, Degerman R, *et al*. **Determinants of mortality among HIV-infected individuals receiving home-based ART in rural Uganda.** *Abstracts of the 14th Conference on Retroviruses and Opportunistic Infections*; February 2007; Los Angeles, USA [abstract 34].
41. Laurent C, Ngom Gueye NF, Ndour CT, Gueye PM, Diouf M, Diakhate N, *et al*. **Long-term benefits of highly active antiretroviral therapy in Senegalese HIV-1-infected adults.** *J Acquir Immune Defic Syndr* 2005; **38**:14–17.
42. Nachega JB, Hislop M, Dowdy DW, Lo M, Omer SB, Regensberg L, *et al*. **Adherence to highly active antiretroviral therapy assessed by pharmacy claims predicts survival in HIV-infected South African adults.** *J Acquir Immune Defic Syndr* 2006; **43**:78–84.
43. Lawn SD, Myer L, Bekker LG, Wood R. **CD4 cell count recovery among HIV-infected patients with very advanced immunodeficiency commencing antiretroviral treatment in sub-Saharan Africa.** *BMC Infect Dis* 2006; **6**:59.
44. Kaufmann GR, Perrin L, Pantaleo G, Opravil M, Furrer H, Telenti A, *et al*. **CD4 T-lymphocyte recovery in individuals with advanced HIV-1 infection receiving potent antiretroviral therapy for 4 years: the Swiss HIV Cohort Study.** *Arch Intern Med* 2003; **163**:2187–2195.
45. Bennett KK, DeGruttola VG, Marschner IC, Havlir DV, Richman DD. **Baseline predictors of CD4 T-lymphocyte recovery with combination antiretroviral therapy.** *J Acquir Immune Defic Syndr* 2002; **31**:20–26.
46. Lawn SD, Myer L, Bekker LG, Wood R. **Burden of tuberculosis in an antiretroviral treatment programme in sub-Saharan Africa: impact on treatment outcomes and implications for tuberculosis control.** *AIDS* 2006; **20**:1605–1612.
47. Moore D, Liechty C, Ekwaru P, Were W, Mwima G, Solberg P, *et al*. **Prevalence, incidence and mortality associated with tuberculosis in HIV-infected patients initiating antiretroviral therapy in rural Uganda.** *AIDS* 2007; **21**:713–719.
48. Lawn SD, Myer L, Bekker LG, Wood R. **Early mortality in patients with HIV-associated tuberculosis in Africa: implications for time to initiation of treatment.** *Programme & Abstracts of the 13th Conference on Retroviruses and Opportunistic Infections (CROI)*; February 2007; Los Angeles, USA. [abstract 0-126].

49. Zachariah R, Fitzgerald M, Massaquoi M, Acabu A, Chilomo D, Salaniponi FM, *et al.* **Does antiretroviral treatment reduce case fatality among HIV-positive patients with tuberculosis in Malawi?** *Int J Tuberc Lung Dis* 2007; **11**:848–853.
50. Lucas SB, Hounnou A, Koffi K, Beaumel A, Andoh J, De Cock KM. **Pathology of paediatric human immunodeficiency virus infections in Cote d'Ivoire.** *East Afr Med J* 1996; **73**:S7–S8.
51. Liechty CA, Solberg P, Were W, Ekwaru JP, Ransom RL, Weidle PJ, *et al.* **Asymptomatic serum cryptococcal antigenemia and early mortality during antiretroviral therapy in rural Uganda.** *Trop Med Int Health* 2007; **12**:929–935.
52. Kambugu A, Castelnuovo B, Wandera B, Kiragga A, Kamya M. **Antiretroviral therapy in an urban African cohort does not prevent significant early mortality.** *Abstracts of the 4th IAS Conference on HIV Pathogenesis, Treatment and Prevention*; July 2007. Sydney, Australia: International AIDS Society [abstract WEPEB055].
53. Rana F, Hawken MP, Meme HK, Chakaya JM, Githui WA, Odhiambo JA, *et al.* **Autopsy findings in HIV-1-infected adults in Kenya.** *J Acquir Immune Defic Syndr Hum Retroviro* 1997; **14**:83–85.
54. Lucas SB, Hounnou A, Peacock C, Beaumel A, Djomand G, N'Gbichi JM, *et al.* **The mortality and pathology of HIV infection in a west African city.** *AIDS* 1993; **7**:1569–1579.
55. Lucas SB, De Cock KM, Hounnou A, Peacock C, Diomande M, Honde M, *et al.* **Contribution of tuberculosis to slim disease in Africa.** *BMJ* 1994; **308**:1531–1533.
56. Lawn SD, Bekker LG, Miller RF. **Immune reconstitution disease associated with mycobacterial infections in HIV-infected individuals receiving antiretrovirals.** *Lancet Infect Dis* 2005; **5**:361–373.
57. Lawn SD, Myer L, Bekker LG, Wood R. **Tuberculosis-associated immune reconstitution disease: incidence, risk factors and impact in an antiretroviral treatment service in South Africa.** *AIDS* 2007; **21**:335–341.
58. Manosuthi W, Kiertiburanakul S, Phoorisri T, Sungkanuparph S. **Immune reconstitution inflammatory syndrome of tuberculosis among HIV-infected patients receiving antituberculous and antiretroviral therapy.** *J Infect* 2006; **53**:357–363.
59. Lawn SD, Bekker LG, Myer L, Orrell C, Wood R. **Cryptococcal immune reconstitution disease: a major cause of early mortality in a South African antiretroviral programme.** *AIDS* 2005; **19**:2050–2052.
60. Bicanic T, Harrison T, Niepieklo A, Dyakopu N, Meintjes G. **Symptomatic relapse of HIV-associated cryptococcal meningitis after initial fluconazole monotherapy: the role of fluconazole resistance and immune reconstitution.** *Clin Infect Dis* 2006; **43**:1069–1073.
61. Bicanic T, Meintjes G, Wood R, Hayes M, Rebe K, Bekker LG, *et al.* **Fungal burden, early fungicidal activity, and outcome in cryptococcal meningitis in antiretroviral-naïve or antiretroviral-experienced patients treated with amphotericin B or fluconazole.** *Clin Infect Dis* 2007; **45**:76–80.
62. Jenny-Avital ER, Abadi M. **Immune reconstitution cryptococcosis after initiation of successful highly active antiretroviral therapy.** *Clin Infect Dis* 2002; **35**:e128–e133.
63. Lortholary O, Fontanet A, Memain N, Martin A, Sitbon K, Dromer F. **Incidence and risk factors of immune reconstitution inflammatory syndrome complicating HIV-associated cryptococcosis in France.** *AIDS* 2005; **19**:1043–1049.
64. Anglaret X, Messou E, Ouassa T, Toure S, Dakoury-Dogbo N, Combe P, *et al.* **Pattern of bacterial diseases in a cohort of HIV-1 infected adults receiving cotrimoxazole prophylaxis in Abidjan, Cote d'Ivoire.** *AIDS* 2003; **17**:575–584.
65. Danel C, Moh R, Anzian A, Abo Y, Chenal H, Guehi C, *et al.* **Tolerance and acceptability of an efavirenz-based regimen in 740 adults (predominantly women) in West Africa.** *J Acquir Immune Defic Syndr* 2006; **42**:29–35.
66. Danel C, Moh R, Minga A, Anzian A, Ba-Gomis O, Kanga C, *et al.* **CD4-guided structured antiretroviral treatment interruption strategy in HIV-infected adults in west Africa (Trivacan ANRS 1269 trial): a randomised trial.** *Lancet* 2006; **367**:1981–1989.
67. van Oosterhout JJ, Laufer MK, Graham SM, Thumba F, Perez MA, Chimbiya N, *et al.* **A community-based study of the incidence of trimethoprim-sulfamethoxazole-preventable infections in Malawian adults living with HIV.** *J Acquir Immune Defic Syndr* 2005; **39**:626–631.
68. Mermin J, Ekwaru JP, Liechty CA, Were W, Downing R, Ransom R, *et al.* **Effect of co-trimoxazole prophylaxis, antiretroviral therapy, and insecticide-treated bednets on the frequency of malaria in HIV-1-infected adults in Uganda: a prospective cohort study.** *Lancet* 2006; **367**:1256–1261.
69. Mwaungulu FB, Floyd S, Crampin AC, Kasimba S, Malema S, Kanyongoloka H, *et al.* **Cotrimoxazole prophylaxis reduces mortality in human immunodeficiency virus-positive tuberculosis patients in Karonga District, Malawi.** *Bull World Health Organ* 2004; **82**:354–363.
70. Sanne I, Mommeja-Marin H, Hinkle J, Bartlett JA, Lederman MM, Maartens G, *et al.* **Severe hepatotoxicity associated with nevirapine use in HIV-infected subjects.** *J Infect Dis* 2005; **191**:825–829.
71. Geddes R, Knight S, Moosa MY, Reddi A, Uebel K, Sunpath H. **A high incidence of nucleoside reverse transcriptase inhibitor (NRTI)-induced lactic acidosis in HIV-infected patients in a South African context.** *S Afr Med J* 2006; **96**:722–724.
72. Moh R, Danel C, Sorho S, Sauvageot D, Anzian A, Minga A, *et al.* **Haematological changes in adults receiving a zidovudine-containing HAART regimen in combination with cotrimoxazole in Cote d'Ivoire.** *Antivir Ther* 2005; **10**:615–624.
73. Boulle A, Orrell C, Kaplan R, Van Cutsem G, McNally M, Hildebrand K, *et al.* **Substitutions due to antiretroviral toxicity or contraindication in the first 3 years of antiretroviral therapy in a large South African cohort.** *Antiv Ther* 2007; **12**:753–760.
74. Hoffmann CJ, Charalambous S, Thio CL, Martin DJ, Pemba L, Fielding KL, *et al.* **Hepatotoxicity in an African antiretroviral therapy cohort: the effect of tuberculosis and hepatitis B.** *AIDS* 2007; **21**:1301–1308.
75. World Health Organisation. *Guidelines on co-trimoxazole prophylaxis for HIV-related infections among children, adolescents and adults. Recommendations for a public health approach.* Geneva: World Health Organisation; 2006.
76. Lowrance D, Makombe S, Clin D, Harries A, Yu J, berle-Grasse J, *et al.* **Lower early mortality rates among patients receiving antiretroviral treatment at clinics offering cotrimoxazole prophylaxis in Malawi.** *J Acquir Immune Defic Syndr* 2007 [Epub ahead of print].
77. Churchyard GJ, Scano F, Grant AD, Chaisson RE. **Tuberculosis preventive therapy in the era of HIV infection: overview and research priorities.** *J Infect Dis* 2007; **196** (Suppl 1):S52–S62.
78. World Health Organisation. *Scaling up antiretroviral therapy in resource-limited settings: guidelines for a public health approach; executive summary.* Geneva: World Health Organisation; 2002.
79. World Health Organisation. *Scaling up antiretroviral therapy in resource-limited settings: guidelines for a public health approach [revised 2003].* Geneva: World Health Organisation; 2002.
80. World Health Organisation. *Antiretroviral therapy for HIV infection in adults and adolescents: recommendations for a public health approach [revised 2006].* Geneva: World Health Organisation; 2006.
81. Lawn SD, Wood R. **National adult antiretroviral therapy guidelines in South Africa: concordance with 2003 WHO guidelines?** *AIDS* 2007; **21**:121–122.
82. Badri M, Lawn SD, Wood R. **Short-term risk of AIDS or death in people infected with HIV-1 before antiretroviral therapy in South Africa: a longitudinal study.** *Lancet* 2006; **368**:1254–1259.
83. Wood R, Middelkoop K, Myer L, Grant AD, Whitelaw A, Lawn SD, *et al.* **Undiagnosed tuberculosis in a community with high HIV prevalence: implications for tuberculosis control.** *Am J Respir Crit Care Med* 2007; **175**:87–93.
84. Mtei L, Matee M, Herfort O, Bakari M, Horsburgh CR, Waddell R, *et al.* **High rates of clinical and subclinical tuberculosis among HIV-infected ambulatory subjects in Tanzania.** *Clin Infect Dis* 2005; **40**:1500–1507.
85. Blanc FX, Havlir DV, Onyebujoh PC, Thim S, Goldfeld AE, Delfraissy JF. **Treatment strategies for HIV-infected patients with tuberculosis: ongoing and planned clinical trials.** *J Infect Dis* 2007; **196** (Suppl 1):S46–S51.
86. Dean GL, Edwards SG, Ives NJ, Matthews G, Fox EF, Navaratne L, *et al.* **Treatment of tuberculosis in HIV-infected persons in the era of highly active antiretroviral therapy.** *AIDS* 2002; **16**:75–83.

87. Dheda K, Lampe FC, Johnson MA, Lipman MC. **Outcome of HIV-associated tuberculosis in the era of highly active antiretroviral therapy.** *J Infect Dis* 2004; **190**:1670–1676.
88. Lawn SD, Wood R. **When should antiretroviral treatment be started in patients with tuberculosis in South Africa?** *S Afr Med J* 2007; **97**:412–415.
89. Lawn SD, Wood R. **Optimum time to initiate antiretroviral therapy in patients with HIV-associated tuberculosis: there may be more than one right answer.** *J Acquir Immune Defic Syndr* 2007; **46**:121–123.
90. Golub JE, Saraceni V, Cavalcante SC, Pacheco AG, Moulton LH, King BS, et al. **The impact of antiretroviral therapy and isoniazid preventive therapy on tuberculosis incidence in HIV-infected patients in Rio de Janeiro, Brazil.** *AIDS* 2007; **21**:1441–1448.
91. Orrell C, Bangsberg DR, Badri M, Wood R. **Adherence is not a barrier to successful antiretroviral therapy in South Africa.** *AIDS* 2003; **17**:1369–1375.
92. Gill CJ, Hamer DH, Simon JL, Thea DM, Sabin LL. **No room for complacency about adherence to antiretroviral therapy in sub-Saharan Africa.** *AIDS* 2005; **19**:1243–1249.